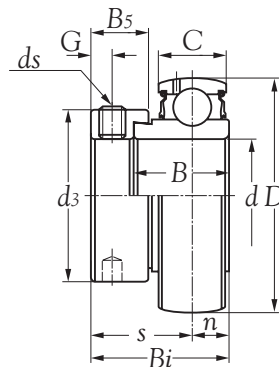




## STANDARD DUTY SPHERICAL OUTSIDE SURFACE BALL BEARINGS ECCENTRIC LOCKING COLLAR TYPE



Shaft dia. mm inch	Bearing number	Nominal dimensions											Basic load ratings		Weight Kg
		mm inch											dynamic Cr	static Cor	
		d	D	Bi	B	C	n	s	G	ds	d3	B5			
12 1/2	SA 201 D1	12	40	28.6	19.1	13	6.5	22.1	5.0	M 6X0.75	28.6	13.5	9,600	4,600	0.14
	SA 201-8 D1	0.5000	1.5748	1.1260	0.7520	0.5118	0.2559	0.8701	0.1968	1/4-28 UNF	1.1260	0.5315			
15 5/8	SA 202 D1	15	40	28.6	19.1	13	6.5	22.1	5.0	M 6X0.75	28.6	13.5	9,600	4,600	0.13
	SA 202-10 D1	0.6250	1.5748	1.1260	0.7520	0.5118	0.2559	0.8701	0.1968	1/4-28 UNF	1.1260	0.5315			
17 11/16	SA 203 D1	17	40	28.6	19.1	13	6.5	22.1	5.0	M 6X0.75	28.6	13.5	9,600	4,600	0.12
	SA 203-11 D1	0.6875	1.5748	1.1260	0.7520	0.5118	0.2559	0.8701	0.1968	1/4-28 UNF	1.1260	0.5315			
20 3/4	SA 204 D1	20	47	31.0	21.5	15	7.5	23.5	5.0	M 6X0.75	33.3	13.5	12,800	6,650	0.18
	SA 204-12 D1	0.7500	1.8504	1.2205	0.8464	0.5906	0.2953	0.9252	0.1968	1/4-28 UNF	1.3110	0.5315			
25 1	SA 205 D1	25	52	31.0	21.5	15	7.5	23.5	5.0	M 6X0.75	38.1	13.5	14,000	7,850	0.20
	SA 205-16 D1	1.0000	2.0472	1.2205	0.8464	0.5906	0.2953	0.9252	0.1968	1/4-28 UNF	1.5000	0.5315			
30 1-1/8 1-1/4	SA 206 D1	30	62	35.7	23.8	18	9.0	26.7	6.0	M 8X1	44.5	15.9	19,500	11,300	0.33
	SA 206-18 D1	1.1250	2.4409	1.4055	0.9370	0.7087	0.3543	1.0512	0.2362	5/16-24 UNF	1.7520	0.6260			
	SA 206-20 D1	1.2500													
35 1-1/4 1-3/8	SA 207 D1	35	72	38.9	25.4	19	9.5	29.4	6.5	M 8X1	55.6	17.5	25,700	15,300	0.50
	SA 207-20 D1	1.2500	2.8346	1.5315	1.0000	0.7480	0.3740	1.1575	0.2559	5/16-24 UNF	2.1890	0.6890			
	SA 207-22 D1	1.3750													
40 1-1/2	SA 208 D1	40	80	43.7	30.2	22	11.0	32.7	6.5	M 10X1.25	60.3	18.3	29,100	17,800	0.65
	SA 208-24 D1	1.5000	3.1496	1.7205	1.1890	0.8661	0.4331	1.2874	0.2559	3/8-24 UNF	2.3740	0.7205			
45 1-5/8 1-3/4	SA 209 D1	45	85	43.7	30.2	22	11.0	32.7	6.5	M 10X1.25	63.5	18.3	32,500	20,400	0.69
	SA 209-26 D1	1.6250	3.3464	1.7205	1.1890	0.8661	0.4331	1.2874	0.2559	3/8-24 UNF	2.5000	0.7205			
	SA 209-28 D1	1.7500													
50 1-7/8	SA 210 D1	50	90	43.7	30.2	22	11.0	32.7	6.5	M 10X1.25	69.9	18.3	35,000	23,200	0.80
	SA 210-30 D1	1.8750	3.5433	1.7205	1.1890	0.8661	0.4331	1.2874	0.2559	3/8-24 UNF	2.7520	0.7205			
55 2	SA 211 D1	55	100	48.4	32.4	24	12.0	36.4	8.0	M 10X1.25	76.2	20.7	43,500	29,200	0.87
	SA 211-32 D1	2.0000	3.9370	1.9055	1.2756	0.9449	0.4724	1.4331	0.3150	3/8-24 UNF	3.0000	0.8150			

Remark: 1) Bearing with grease holes and grease groove.  
2) Bearing without stop pin.

**Technical supplement**

<b>Cages</b>	<b>Slinger</b>	<b>Precision</b>	<b>Grease</b>
Steel	Steel	Normal	Shell Alvania RLQ 2

Remark: If you have more inquiry of technical, please inquire  
**SLB** web-site: [Http://www.slbgroup.com](http://www.slbgroup.com).